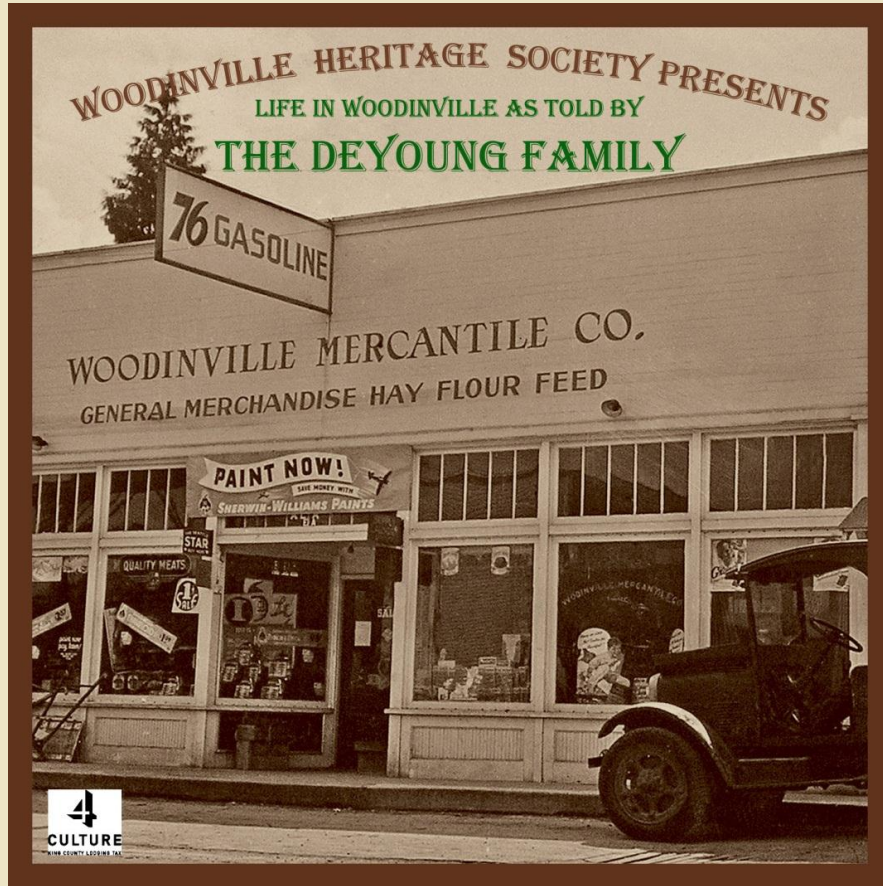


Life in Woodinville DVD: *The DeYoung Family*



The DeYoung Family is shown in a 1936 photo taken in front of their new Woodinville home built in 1931. A Dutch Colonial style was chosen to commemorate John DeYoung's Dutch heritage. The family left to right:

Back row: Milford, Lowell, and Anna Frances

Middle row: Bob, John & Ellen DeYoung

Front row: Jim & Al

John and Ellen DeYoung moved from Kent to Woodinville, Washington in 1925 along with their four children Milford, Anna Frances, Lowell and Bob. Two additional children, Jim and Al, were born in Woodinville. Over the years, John DeYoung established several businesses in Woodinville that included the Woodinville Mercantile Company which sold general merchandise, feed, fuel and housed the Post Office. He also had a lettuce packing plant, a shingle mill, and the Woodinville Hardware-Plumbing.

The DeYongs were devoted to family, church and the community. In 2008, Lowell and Al DeYoung arranged for the DeYoung family home to be purchased by the Woodinville Heritage Society. Today the home serves as the office for the Woodinville Heritage Society and by 2011 will also house the Woodinville Heritage Museum.

Recorded March 17, 2007

Standard 4:3 Video Format